

MONTHLY MEMBERSHIP PROGRESS REPORT

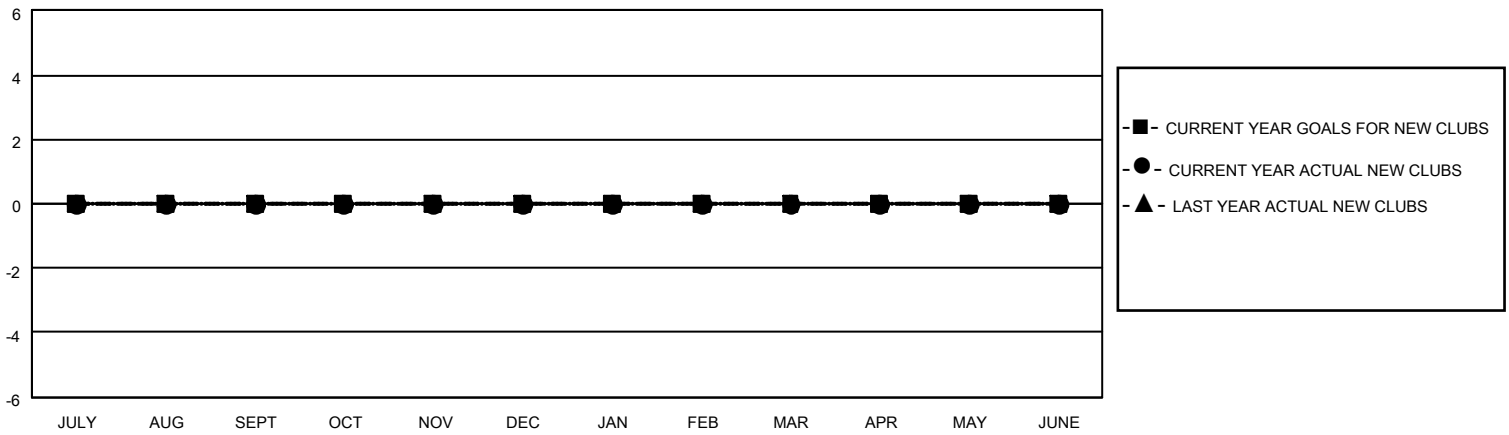
LOCATION NEW ZEALAND

District 202 M

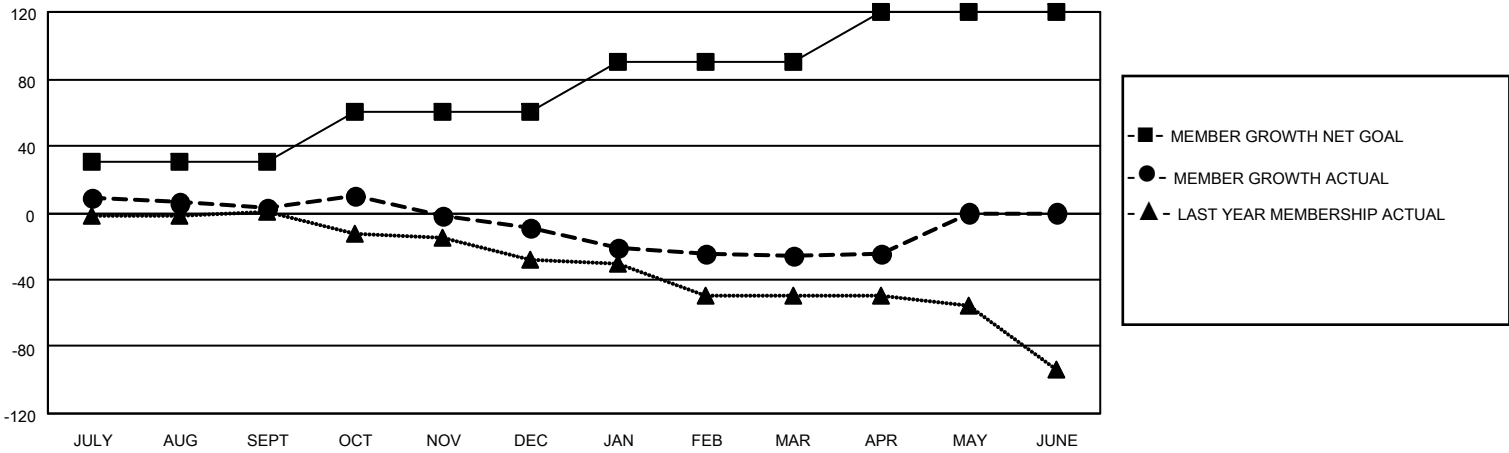
Results as of: 4/30/2022

Clubs				Members			
RESULTS FOR 2021-2022				RESULTS FOR 2021-2022			
QUARTER	NEW CLUB GOAL	NEW CLUBS	DROPPED CLUBS	QUARTER	MEMBER GROWTH NET GOAL	MEMBER GROWTH ACTUAL	DROPPED MEMBERS ACTUAL (including transfers)
JULY/AUG/SEPT	0	0	1	JULY/AUG/SEPT	30	23	19
OCT/NOV/DEC	0	0	0	OCT/NOV/DEC	30	25	34
JAN/FEB/MAR	0	0	0	JAN/FEB/MAR	30	8	23
APR/MAY/JUNE	0	0	0	APR/MAY/JUNE	30	6	4

GOALS AND ACTUAL NEW CLUBS CUMULATIVE



GOALS AND ACTUAL MEMBERS CUMULATIVE



<p>DROPPED CLUBS: 1</p>	<p>26 CLUBS OF 42 ADDED 1 OR MORE NEW MEMBERS</p>	<p style="text-align: center;"><u>GENDER DISTRIBUTION</u></p> <p>MALE 595 (62.11%) FEMALE 363 (37.89%) NON BINARY 0 (0.00%) PREFER NOT TO ANSWER 0 (0.00%)</p>
<p><u>DROPPED MEMBERS</u></p> <p>DECEASED 15 CLUB CANCELLED 0 OTHER 65 TOTAL 80</p>	<p>CLICK HERE FOR CUMULATIVE MEMBERSHIP DATA</p>	<p>TOTAL FAMILY UNIT MEMBERS 87 FAMILY MEMBERS PAYING HALF DUES 44</p>